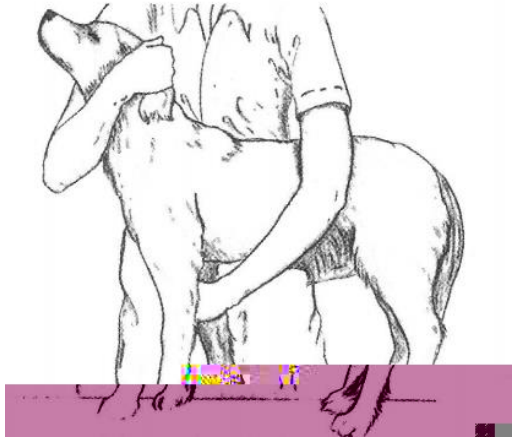
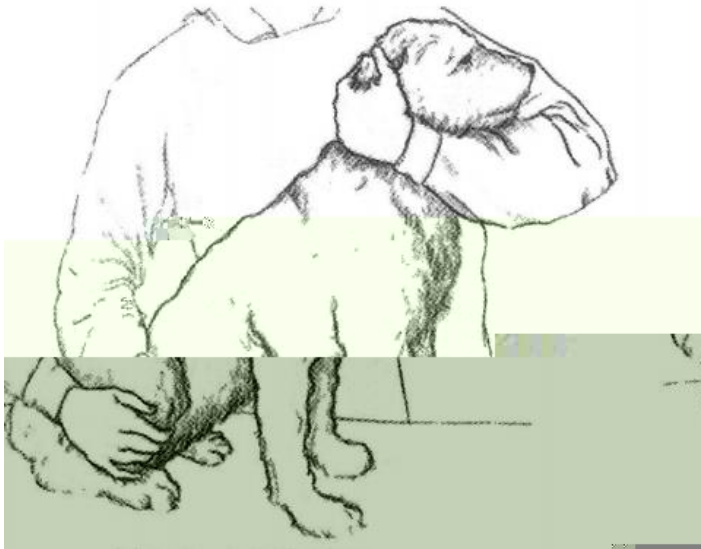
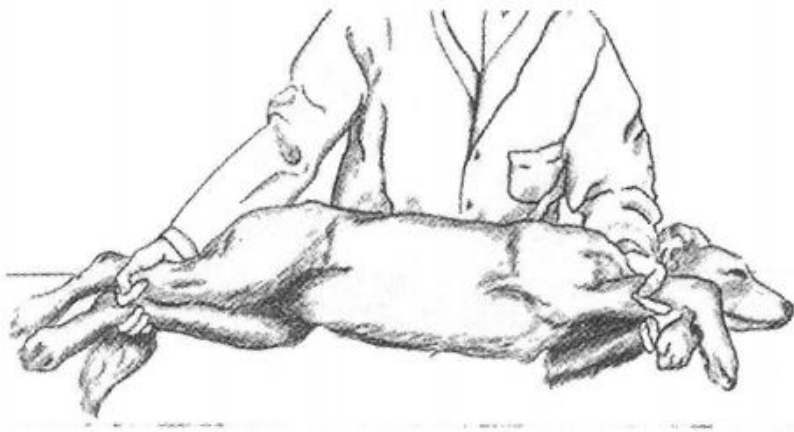


- 1.
- 2.

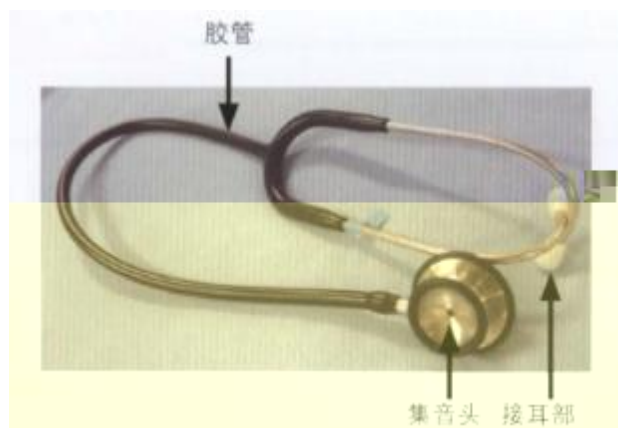










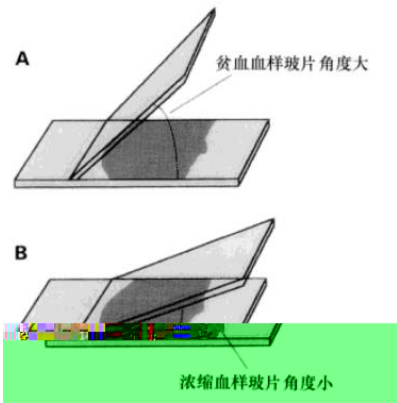
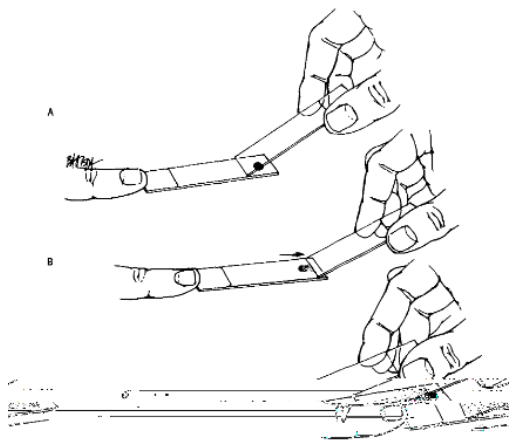


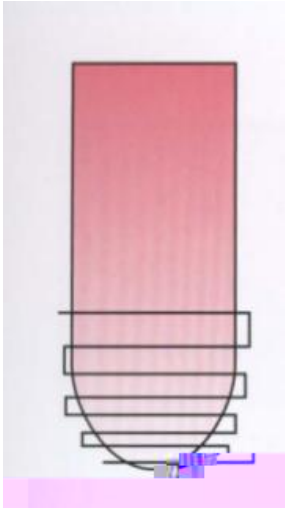


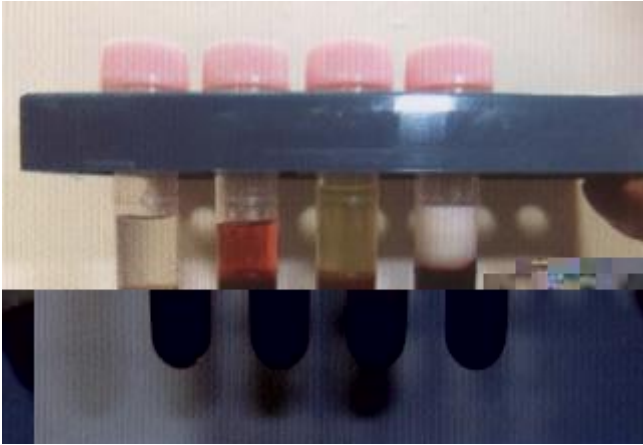
2.

3.

1.









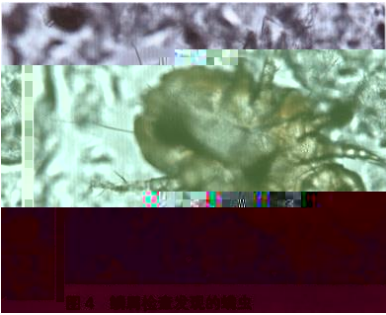


图 1 被褥检查发现的螨虫

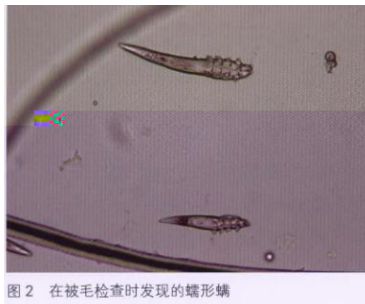
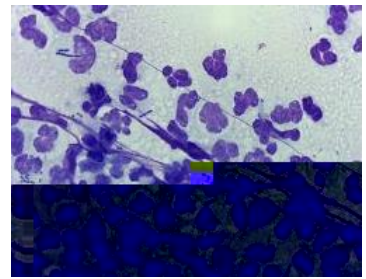
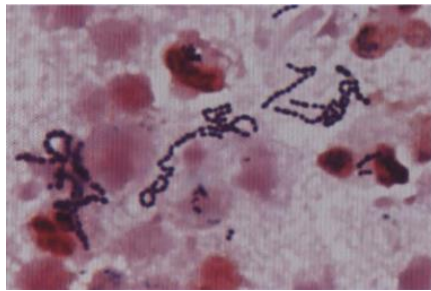
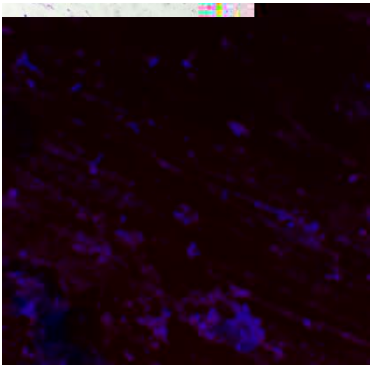
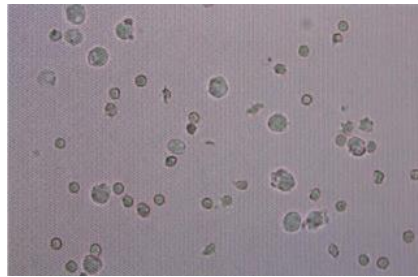
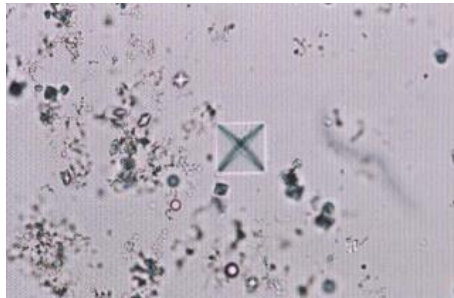
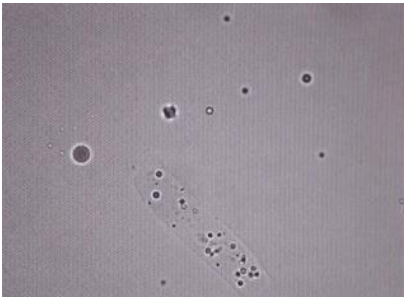
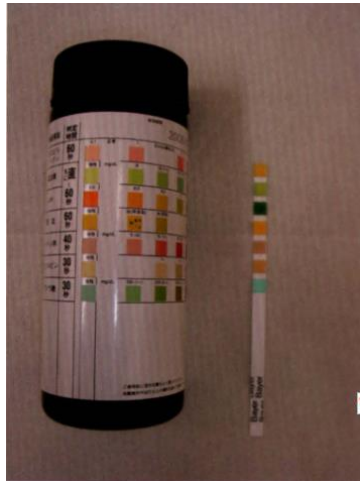
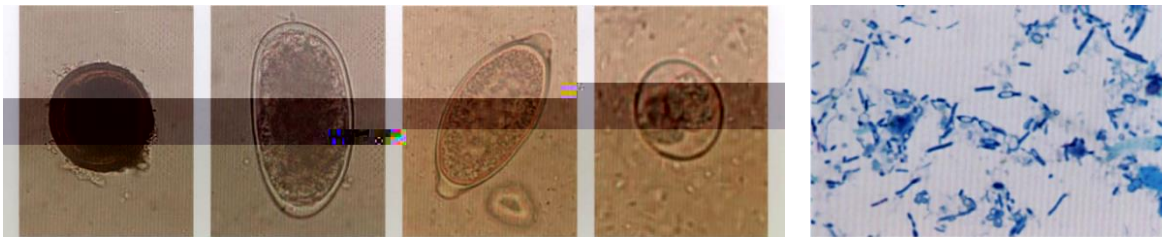


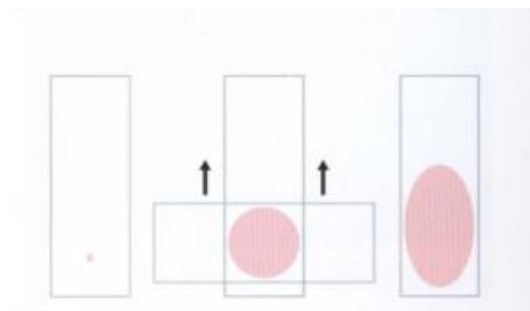
图 2 在被毛检查时发现的蠕形螨

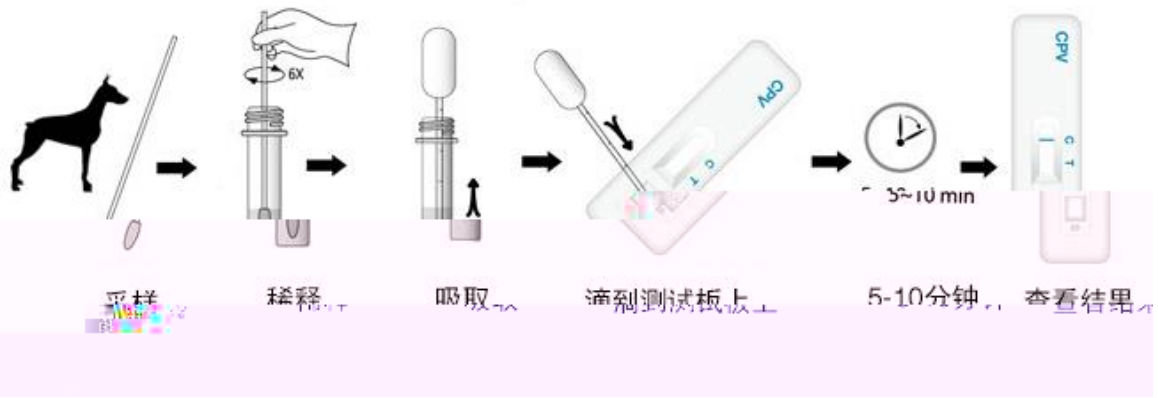




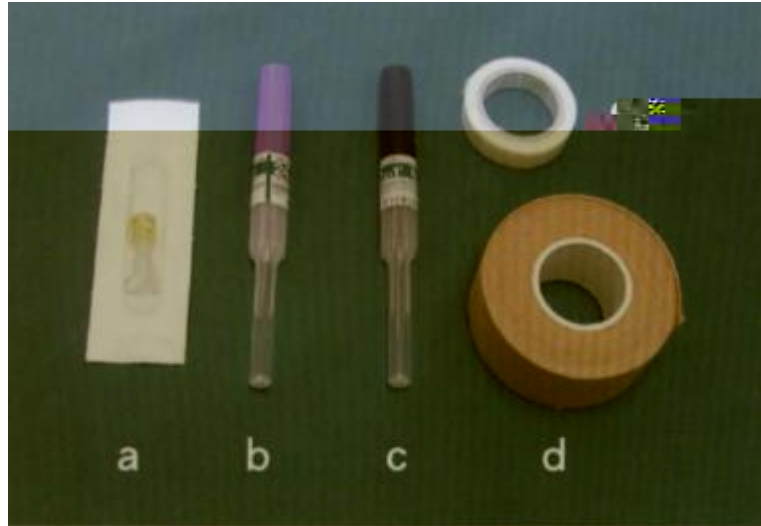












笼子内	手术后	外伤	癌症	败血症	大范围烫伤
1.25	1.25~1.35	1.35~1.50	1.50~1.75	1.50~1.70	1.70~2.00

动物体重 (kg)	3	10	50
维持量 (ml/kg/day)	80	65	50

